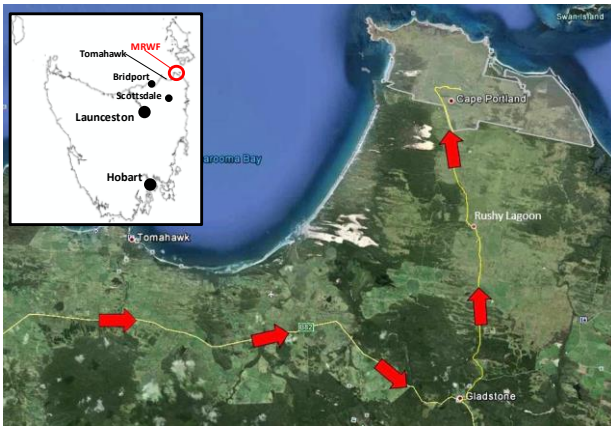


## Musselroe Wind Farm (MRWF)

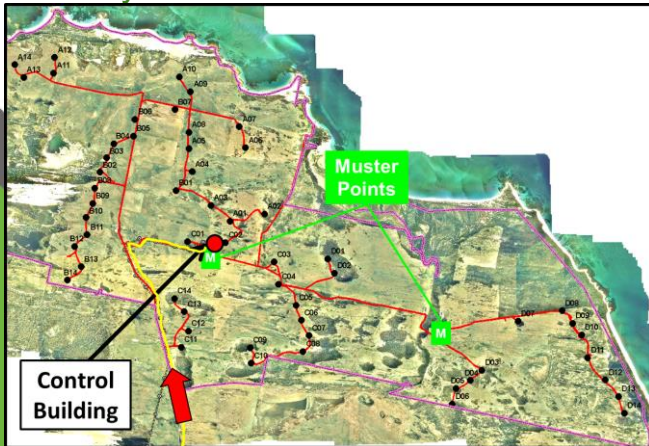
MRWF is owned and managed by Woolnorth Wind Farm Holding Pty Ltd (Woolnorth Wind Farms, WNH), a joint venture company owned by Hydro Tasmania (25%) and Shenhua Clean Energy Holdings (75%). Vestas is the primary operation and maintenance contractor for the turbines whilst the balance of plant are directly managed by Woolnorth Wind Farms.

## Location

MRWF is located 25km north of Gladstone in north east Tasmania, on the Cape Portland property. The wind farm consists of 56 V90 (3 megawatt) Vestas turbines and a 50 km (110kV, 154 tower) single circuit transmission line connected to the national grid at the Derby sub-station.



## Site Layout



## Site Roles & Contacts

Site Supervisor - Tony Saunders (0400 675 743)  
 Regional Co-ord. - Lance Lovell (0439 380 410)  
 HSE Advisor - Robert Barbour (0407 835 261)  
 Site Sup. (Vestas) – Tim Etchells (0427 048 945)  
 Farm Manager – Ray Groves (0427 384 101)

## HSE Management System

MRWF is managed under the Hydro Tasmania Health, Safety & Environment System, with supporting documents supplied by WNH. All HSE documents are available at [www.hydro.com.au/health-safety-and-environmental-management](http://www.hydro.com.au/health-safety-and-environmental-management). The portal username is ContractorHSE@woolnorthwind.com.au, with the password “CØntractorHSE”.

## Required PPE

PPE is mandatory (except offices and car park)



## Control Building



## Traffic Management

- Speed limits are signposted across the site and are to be adhered to.
- Off-road driving requires authorisation and diesel vehicles only.
- Vehicles are to be parked into the wind and out of turbine “drop zone”.
- All vehicles are to arrive registered, clean, well serviced, have first aid kits & fire extinguishers.

## Site Communications

- Telephones and internet (wireless and port) are available at the control building
- Cape Portland generally has poor mobile phone reception, however the control building does have a local reception booster.
- Vestas have a private UHF channel with a site repeater, while the farm staff operate on open UHF channel 16.

## Site Security and Access

- All personnel must register their attendance when arriving and leaving site.
- Security gates operated via swipe card control access to the site (see Site Super. for card).
- There is no reception on site, so visitors need to organise their arrival in advance.
- Afterhours access - the control building’s security system and game management shooting need to be considered.

## Site Safety, First Aid & Emergencies

- The Safety Management and Emergency Response Plans are at the site information board as well as available at the Hydro website.
- First aid kits are located in the Control Building, and site vehicles.
- A defibrillation unit is located in the Control Building.
- All site personnel are Lvl 2 first aid trained.
- Emergency lighting exists within the buildings but not the turbines.
- **For EMERGENCY SERVICES in Australia ring 000.**

## Hazards

- Site remoteness – poor comm.s, slow emergency service response.
- Weather conditions can be extreme on site with strong winds, hot fire-risk weather in summer and wet conditions possible any time of year.
- High incidence of snakes on site, gaiters must be used if in long grass.
- MRWF is a multiple use site with staff, contractors, farm staff, tourism activities, heavy vehicles, and private access taking place.
- Access to MRWF is via gravel roads with frequent wildlife.

## Drugs, Alcohol & Smoking

- Random drug and alcohol testing, 0.0 BAL, 0 tolerance
- Smoking on hardstands only- all butts to be binned.

## Chemicals

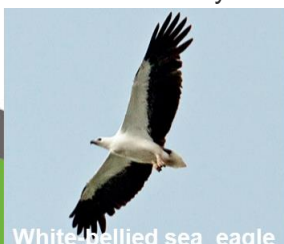
All Haz Chems and Dangerous Goods in significant volumes are to be approved with an SDS prior to entry. Their storage, handling, use, and disposal are to be conducted in accordance with their SDS, Australian Standards, and the On-Site Chemical Management Protocols.

## Environment

- MRWF operates under state and commonwealth environmental permits, and associated management plans (EMPs).
- All the environmental management requirements for the site are consolidated in the Site EMP.
- One of the most significant concerns for MRWF is the collision of birds with turbine blades. Considerable research is conducted to understand the risk, however, any bird collisions that are identified need to be reported immediately.



Wedge-tailed eagle



White-bellied sea eagle

## Environment (cont.)

- No pets, firearms, fire wood collection or fires are allowed on site, without authorisation.
- All rubbish is to be disposed of in bins. A waste transfer point exists at the site chemical store
- All machines, vehicles and equipment are to arrive at site free of mud and vegetation.

## Heritage

Cape Portland holds considerable Aboriginal and European heritage value, with numerous artefacts, features and stories relating to the property. If any items of apparent heritage value are identified, then the Site Supervisor should be notified immediately.

## Farming activities

The Cape Portland property is owned by Hydro Tasmania. The property is grazed under a licence held by Southern Rural Enterprises, for beef production.

## Reporting of Incidents

All incident and hazardous observations are to be reported to the site supervisor. These include injuries, near misses, spills, dead or injured animals (farm or native), equipment failures or trespassers.

## Woolnorth Wind Farm Holding Pty Ltd

ACN: 154 051 617  
Lvl 1, 59 Cameron Street  
Launceston, Tasmania 7250

## Musselroe Wind Farm

PO box 14, Gladstone, TAS 7264  
2205 Cape Portland Rd, Cape Portland, TAS 7264  
Freight: Contact Site Supervisor

## Site Supervisor

Tony Saunders  
Ph. +61 3 63574004  
Email: [Tony.Saunders@WoolnorthWind.com.au](mailto:Tony.Saunders@WoolnorthWind.com.au)



Produced by: Robert Barbour, Review By: Tony Saunders, 25<sup>th</sup> Nov 2015



## Musselroe Wind Farm Site Information

**The wind farm is remote with no visitor reception.  
Contact your site rep. BEFORE travelling to site.**